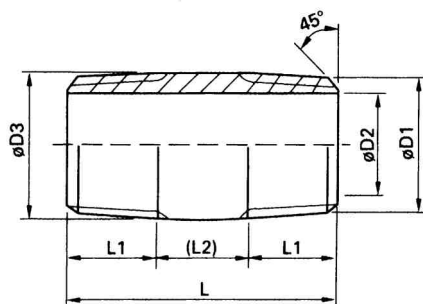


# Złącza gwintowane ITALINOX-POLSKA

## DWUZŁĄCZKA GWINTOWANA, wkrętna, okrągła (NIPEL) Z11

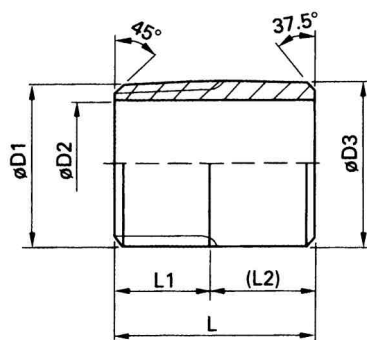


gwint wykonany wg normy:  
DIN

materiał: AISI 304, AISI 316

Rozmiar	D1	D2	D3	L	L1	L2	Waga
cal	cal	mm	mm	mm	mm	mm	kg
1/8"	1/8"	6,0	10,0	40,0	10,5	19,0	0,017
1/4"	1/4"	9,0	13,5	40,0	12,0	16,0	0,029
3/8"	3/8"	12,0	17,0	40,0	12,0	16,0	0,038
1/2"	1/2"	16,0	21,0	60,0	17,0	26,0	0,083
3/4"	3/4"	21,0	27,0	60,0	17,0	26,0	0,111
1"	1"	27,0	33,5	60,0	19,0	22,0	0,164
1 1/4"	1 1/4"	35,0	42,0	80,0	22,0	36,0	0,292
1 1/2"	1 1/2"	41,0	48,0	80,0	22,0	36,0	0,347
2"	2"	53,0	60,5	100,0	26,0	48,0	0,579
2 1/2"	2 1/2"	66,0	76,0	100,0	26,0	48,0	0,921
3"	3"	79,0	89,0	120,0	30,0	60,0	1,454
4"	4"	103,0	114,0	120,0	30,0	50,0	2,071

## KRÓCIEC GWINTOWANY wkrętny (KOŃCÓWKA G.Z.) Z17



gwint wykonany wg normy:  
DIN

materiał: AISI 304, AISI 316

Rozmiar	D1	D2	D3	L	L1	L2	Waga
cal	cal	mm	mm	mm	mm	mm	kg
1/8"	1/8"	6,0	10,0	30,0	10,0	20,0	0,013
1/4"	1/4"	9,0	13,5	30,0	12,0	18,0	0,023
3/8"	3/8"	12,0	17,0	30,0	12,0	18,0	0,030
1/2"	1/2"	16,0	21,0	35,0	17,0	18,0	0,051
3/4"	3/4"	21,0	27,0	40,0	19,0	21,0	0,076
1"	1"	27,0	33,5	40,0	19,0	21,0	0,112
1 1/4"	1 1/4"	35,0	42,0	50,0	22,0	28,0	0,189
1 1/2"	1 1/2"	41,0	48,0	50,0	22,0	28,0	0,225
2"	2"	53,0	60,5	50,0	25,0	25,0	0,303
2 1/2"	2 1/2"	66,0	76,0	60,0	25,0	35,0	0,568
3"	3"	79,0	89,0	70,0	30,0	40,0	0,862
4"	4"	103,0	114,0	80,0	35,0	45,0	1,386