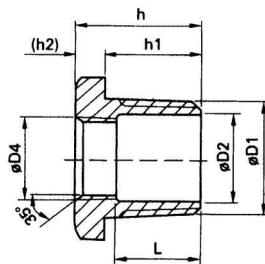
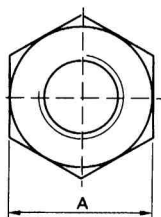


Złącza gwintowane ITALINOX-POLSKA

REDUKCJA GWINTOWANA nakr tno - wkr tna z sze ciok tem Z10



gwint wykonany wg normy:
DIN

materiał: AISI 304, AISI 316

Rozmiar	A	L	D1	D2	D4	h	h1	h2
cal	mm	mm	cal	mm	cal	mm	mm	mm
1/4"x1/8"	17,0	15,0	1/4"	8,5	1/8"	22,5	17,0	5,5
3/8"x1/8"	22,0	15,0	3/8"	11,0	1/8"	23,0	17,0	6,0
3/8"x1/4"	22,0		3/8"	11,0	1/4"	23,0	17,0	6,0
1/2"x1/8"	26,0	17,0	1/2"	14,5	1/8"	25,5	20,0	5,5
1/2"x1/4"	26,0	17,0	1/2"	14,5	1/4"	25,5	20,0	5,5
1/2"x3/8"	26,0		1/2"	14,5	3/8"	25,5	20,0	5,5
3/4"x1/8"	32,0	17,5	3/4"	18,0	1/8"	26,5	20,0	6,5
3/4"x1/4"	32,0	17,5	3/4"	18,0	1/4"	26,5	20,0	6,5
3/4"x3/8"	32,0	17,5	3/4"	18,0	3/8"	26,5	20,0	6,5
3/4"x1/2"	32,0		3/4"	18,0	1/2"	26,5	20,0	6,5
1"x1/8"	38,0	24,5	1"	26,0	1/8"	33,5	25,5	8,0
1"x1/4"	38,0	24,5	1"	26,0	1/4"	33,5	25,5	8,0
1"x3/8"	38,0	24,5	1"	26,0	3/8"	33,5	25,5	8,0
1"x1/2"	38,0	22,0	1"	26,0	1/2"	33,5	25,5	8,0
1"x3/4"	38,0	20,5	1"	26,0	3/4"	33,5	25,5	8,0
1 1/4"x1/8"	46,0	26,0	1 1/4"	35,0	1/8"	34,0	26,0	8,0
1 1/4"x1/4"	46,0	24,5	1 1/4"	35,0	1/4"	34,0	26,0	8,0
1 1/4"x3/8"	46,0	24,5	1 1/4"	35,0	3/8"	34,0	26,0	8,0
1 1/4"x1/2"	46,0	23,0	1 1/4"	35,0	1/2"	34,0	26,0	8,0
1 1/4"x3/4"	46,0	21,0	1 1/4"	35,0	3/4"	34,0	26,0	8,0
1 1/4"x1"	46,0	19,5	1 1/4"	35,0	1"	34,0	26,0	8,0
1 1/2"x1/8"	52,0	27,0	1 1/2"	40,0	1/8"	36,0	26,0	10,0
1 1/2"x1/4"	52,0	27,0	1 1/2"	40,0	1/4"	36,0	26,0	10,0
1 1/2"x3/8"	52,0	26,0	1 1/2"	40,0	3/8"	36,0	26,0	10,0
1 1/2"x1/2"	52,0	24,0	1 1/2"	40,0	1/2"	36,0	26,0	10,0
1 1/2"x3/4"	52,0	23,0	1 1/2"	40,0	3/4"	36,0	26,0	10,0
1 1/2"x1"	52,0	21,0	1 1/2"	40,0	1"	36,0	26,0	10,0
1 1/2"x1 1/4"	52,0	18,5	2"	40,0	1 1/4"	36,0	26,0	10,0
2"x1/8"	63,0	28,0	2"	51,0	1/8"	36,0	25,5	10,5
2"x1/4"	63,0	27,0	2"	51,0	1/4"	36,0	25,5	10,5
2"x3/8"	63,0	27,0	2"	51,0	3/8"	36,0	25,5	10,5
2"x1/2"	63,0	25,0	2"	51,0	1/2"	36,0	25,5	10,5
2"x3/4"	63,0	23,0	2"	51,0	3/4"	36,0	25,5	10,5
2"x1"	63,0	22,0	2"	51,0	1"	36,0	25,5	10,5
2"x1 1/4"	63,0	20,0	2"	51,0	1 1/4"	36,0	25,5	10,5
2"x1 1/2"	63,0	20,0	2"	51,0	1 1/2"	36,0	25,5	10,5
2 1/2"x1/2"	80,0	38,5	2 1/2"	63,0	1/2"	49,0	37,0	12,0
2 1/2"x3/4"	80,0	36,5	2 1/2"	63,0	3/4"	49,0	37,0	12,0
2 1/2"x1"	80,0	34,5	2 1/2"	63,0	1"	49,0	37,0	12,0
2 1/2"x1 1/4"	80,0	31,5	2 1/2"	63,0	1 1/4"	49,0	37,0	12,0
2 1/2"x1 1/2"	80,0	30,0	2 1/2"	63,0	1 1/2"	49,0	37,0	12,0
2 1/2"x2"	80,0	29,0	2 1/2"	63,0	2"	49,0	37,0	12,0
3"x1/2"	95,0	39,0	3"	77,0	1/2"	50,0	37,0	13,0
3"x3/4"	95,0	37,0	3"	77,0	3/4"	50,0	37,0	13,0
3"x1"	95,0	35,0	3"	77,0	1"	50,0	37,0	13,0
3"x1 1/4"	95,0	32,0	3"	77,0	1 1/4"	50,0	37,0	13,0
3"x1 1/2"	95,0	31,0	3"	77,0	1 1/2"	50,0	37,0	13,0
3"x2"	95,0	30,0	3"	77,0	2"	50,0	37,0	13,0
3"x2 1/2"	95,0	26,0	3"	77,0	2 1/2"	50,0	37,0	13,0
4"x1/2"	120,0	40,0	4"	101,0	1/2"	51,0	37,0	14,0
4"x3/4"	120,0	38,5	4"	101,0	3/4"	51,0	37,0	14,0
4"x1"	120,0	36,0	4"	101,0	1"	51,0	37,0	14,0
4"x1 1/4"	120,0	33,5	4"	101,0	1 1/4"	51,0	37,0	14,0
4"x1 1/2"	120,0	32,0	4"	101,0	1 1/2"	51,0	37,0	14,0
4"x2"	120,0	31,0	4"	101,0	2"	51,0	37,0	14,0
4"x2 1/2"	120,0	28,0	4"	101,0	2 1/2"	51,0	37,0	14,0
4"x3"	120,0	26,0	4"	101,0	3"	51,0	37,0	14,0