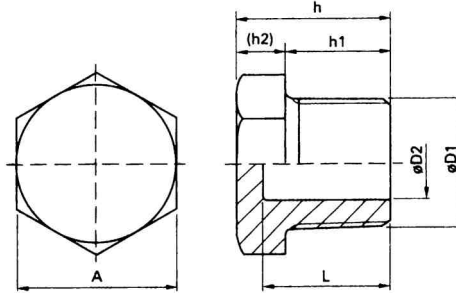


# Złącza gwintowane

ITALINOX - POLSKA

## ZA LEPKA GWINTOWANA wkr tna z sze ciok tem (KOREK) Z23

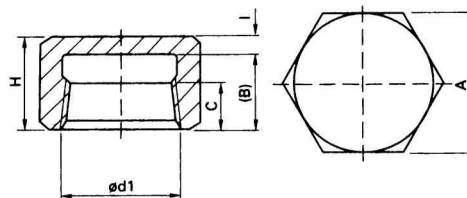


gwint wykonany wg normy:  
DIN

materiał: AISI 304, AISI 316

Rozmiar	A	D1	D2	L	h	h1	Waga
cal	mm	cal	mm	mm	mm	mm	kg
1/8"	14,0	1/8"			17,0	11,0	0,016
1/4"	17,0	1/4"			18,0	12,0	0,025
3/8"	21,0	3/8"	9,0	20,5	23,5	17,0	0,034
1/2"	26,0	1/2"	14,5	25,0	28,0	20,0	0,048
3/4"	32,0	3/4"	18,0	25,0	28,0	20,0	0,088
1"	38,0	1"	26,0	30,0	34,0	25,0	0,116
1 1/4"	46,0	1 1/4"	34,0	31,0	35,0	25,0	0,188
1 1/2"	52,0	1 1/2"	38,5	33,0	36,0	25,0	0,265
2"	65,0	2"	50,0	34,0	37,5	26,0	0,395
2 1/2"	80,0	2 1/2"	60,0	35,0	40,0	28,0	0,759
3"	95,0	3"	75,0	39,0	45,0	32,0	1,030
4"	120,0	4"	100,0	45,0	51,0	37,0	1,662

## ZA LEPKA GWINTOWANA nakr tna, sze ciok tna Z21



gwint wykonany wg normy:  
DIN

materiał: AISI 316

Rozmiar	A	d1	C	l	B	Waga
cal	mm	cal	mm	mm	mm	kg
1/8"	16,0	1/8"	6,2	3,0	13,0	0,019
1/4"	18,0	1/4"	9,4	3,0	17,0	0,300
3/8"	20,0	3/8"	9,7	3,0	18,0	0,330
1/2"	26,0	1/2"	10,0	3,0	19,5	0,073
3/4"	32,0	3/4"	11,0	3,0	20,0	0,100
1"	39,0	1"	15,0	3,0	23,0	0,170
1 1/4"	49,0	1 1/4"	17,5	4,0	24,5	0,240
1 1/2"	55,0	1 1/2"	18,0	4,0	28,0	0,380
2"	66,0	2"	19,0	3,0	32,0	0,469
2 1/2"	85,0	2 1/2"	22,0	6,0	36,0	0,850
3"	100,0	3"	24,0	6,0	39,5	1,235
4"	125,0	4"	26,0	6,0	49,0	2,090