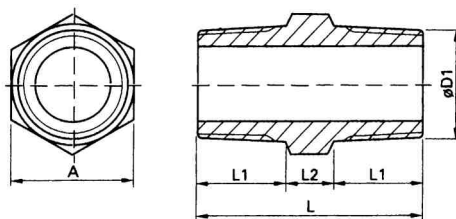


Złącza gwintowane ITALINOX-POLSKA

DWUZŁĄCZKA GWINTOWANA wkrętna, z sześciokątem (NIPEL) Z14

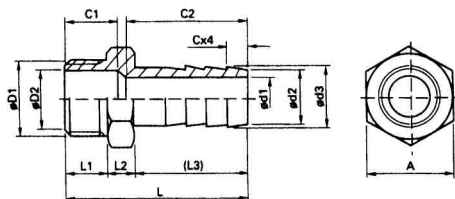


gwint wykonany wg normy:
DIN

materiał: AISI 304, AISI 316

Rozmiar	A	D1	L	L1	L2	Waga
cal	mm	cal	mm	mm	mm	kg
1/8"	13,0	1/8"	31,0	12,0	7,0	0,018
1/4"	15,0	1/4"	33,0	13,0	7,0	0,028
3/8"	20,0	3/8"	42,0	17,0	8,0	0,047
1/2"	23,0	1/2"	50,0	20,0	10,0	0,080
3/4"	29,0	3/4"	51,0	20,0	11,0	0,109
1"	36,0	1"	63,0	25,5	12,0	0,174
1 1/4"	46,0	1 1/4"	59,0	23,5	12,0	0,247
1 1/2"	51,0	1 1/2"	64,0	25,0	14,0	0,371
2"	63,0	2"	68,0	27,0	14,0	0,533
2 1/2"	80,0	2 1/2"	73,0	28,0	17,0	1,141
3"	95,0	3"	86,0	34,0	18,0	1,366
4"	120,0	4"	90,0	36,0	18,0	1,899

KOŃCOWKA NA WAŻ GWINTOWANA wkrętna Z09



gwint wykonany wg normy:
DIN

materiał: AISI 304, AISI 316

Rozm.	A	D1	D2	C	C1	C2	L	L1	L2	L3	d1	d2	d3	Waga
cal	mm	cal	mm	mm	mm	mm	mm	mm	mm	mm	mm	mm	mm	kg
1/4"	16,0	1/4"	6,5	4,0	17,0	28,0	46,5	13,0	10,0	23,5	5,0	8,0	9,0	0,036
3/8"	19,0	3/8"	9,5	5,5	18,0	31,0	51,5	13,0	10,0	28,5	6,5	10,0	11,0	0,053
1/2"	25,0	1/2"	14,5	6,5	19,0	41,0	62,5	15,5	10,0	37,0	9,5	13,5	14,5	0,099
3/4"	31,0	3/4"	18,0	8,5	23,0	48,0	72,5	18,0	11,5	43,0	14,5	19,5	20,5	0,173
1"	38,0	1"	26,0	9,0	25,0	55,0	82,0	19,5	12,5	50,0	20,0	25,5	26,5	0,240
1 1/4"	46,0	1 1/4"	35,0	9,5	28,0	48,0	80,0	22,5	12,5	53,0	27,0	32,5	34,0	0,324
1 1/2"	52,0	1 1/2"	40,0	10,5	31,0	58,0	92,5	23,0	13,5	56,0	33,0	38,5	40,5	0,455
2"	65,0	2"	51,5	13,0	33,0	74,0	109,5	24,5	15,0	70,0	45,0	50,5	52,5	0,779
2 1/2"	80,0	2 1/2"	67,0	16,0	37,0	95,0	136,0	27,0	16,0	93,0	58,0	62,0	64,0	1,280
3"	95,0	3"	78,0	17,0	43,0	100,0	147,0	33,0	17,0	97,0	70,0	75,0	78,0	1,801
4"	120,0	4"	102,0	21,0	48,0	105,0	158,0	36,0	18,0	104,0	90,0	101,0	104,0	3,404